

# Автоматические швейные машины се ии LS е нические а акте истики

## По вопросам продаж и поддержки обращайтесь:

Алматы (7273)495-231	Казань (843)206-01-48	Новокузнецк (3843)20-46-81	Смоленск (4812)29-41-54
Архангельск (8182)63-90-72	Калининград (4012)72-03-81	Новосибирск (383)227-86-73	Сочи (862)225-72-31
Астрахань (8512)99-46-04	Калуга (4842)92-23-67	Омск (3812)21-46-40	Ставрополь (8652)20-65-13
Барнаул (3852)73-04-60	Кемерово (3842)65-04-62	Орел (4862)44-53-42	Сургут (3462)77-98-35
Белгород (4722)40-23-64	Киров (8332)68-02-04	Оренбург (3532)37-68-04	Тверь (4822)63-31-35
Брянск (4832)59-03-52	Краснодар (861)203-40-90	Пенза (8412)22-31-16	Томск (3822)98-41-53
Владивосток (423)249-28-31	Красноярск (391)204-63-61	Пермь (342)205-81-47	Тула (4872)74-02-29
Волгоград (844)278-03-48	Курск (4712)77-13-04	Ростов-на-Дону (863)308-18-15	Тюмень (3452)66-21-18
Вологда (8172)26-41-59	Липецк (4742)52-20-81	Рязань (4912)46-61-64	Ульяновск (8422)24-23-59
Воронеж (473)204-51-73	Магнитогорск (3519)55-03-13	Самара (846)206-03-16	Уфа (347)229-48-12
Екатеринбург (343)384-55-89	Москва (495)268-04-70	Санкт-Петербург (812)309-46-40	Хабаровск (4212)92-98-04
Иваново (4932)77-34-06	Мурманск (8152)59-64-93	Саратов (845)249-38-78	Челябинск (351)202-03-61
Ижевск (3412)26-03-58	Набережные Челны (8552)20-53-41	Севастополь (8692)22-31-93	Череповец (8202)49-02-64
Иркутск (395)279-98-46	Нижний Новгород (831)429-08-12	Симферополь (3652)67-13-56	Ярославль (4852)69-52-93
Россия (495)268-04-70	Киргизия (996)312-96-26-47	Казахстан (7172)727-132	



## LS-9027-Fully automatic single head non-iron bag machine

LS-9027

The fully automatic non-iron baby bag sticking unit, through precise design and computer system control, realizes the automatic assembly line of the sticking process such as pressing, cold folding, feeding, sewing, and receiving.

Production. The standard productivity of 8 hours is about 2000 pockets (the efficiency of pocket patch pockets varies with different sewing materials and different specifications ). The machine is used instead of technical work, which is high-quality and efficient, and is more suitable for mass-order production.

### **quality and detail**

Servo motor feeding, the precision can be controlled at 0.005 mm, the folding bag parts use two stages to lift as a whole , the folding bag is beautiful and not deformed. Equipped with electronic thread clamping/secondary thread clamping device, the stitches are perfectly sewn in forward and reverse directions. Easy-to-adjust pouch press device for easy and quick die change. One-key switch pre-shrinking mechanism, to achieve two models of one use.

### **Scope of application**

The maximum patch pocket range is 210mm\*250mm, which is suitable for sewing of various and various shapes such as round, square, triangular, and asymmetric polygonal pockets .



## LS-9026-Automatic non-iron sticker bag unit

Universal automatic sewing unit

型号 / Model	LS 9026
最高缝速 / Max. sewing speed	2200
最大缝制范围 Max. sewing area	210x200mm
最大针码 / Max Stitch length	7mm
机针 / Needle system	DBx1(#11-18),DPx5(Nm75-110)
电源 / Power supply	220v,50/60Hz
功率 / power	2.3Kw(带泵 /with pump) , 1.2Kw(泵不工作/without pump)
机器尺寸 / Machine size	1950*1220mm
机器重量 / Weight	Weight :250kg

### use:

Pocket sewing (thin material sewing) is mainly suitable for shirts, thin material knitting series, can adapt to various shapes such as: round, square, triangle, asymmetric polygonal pocket patch pocket sewing.

### Main technical innovation points:

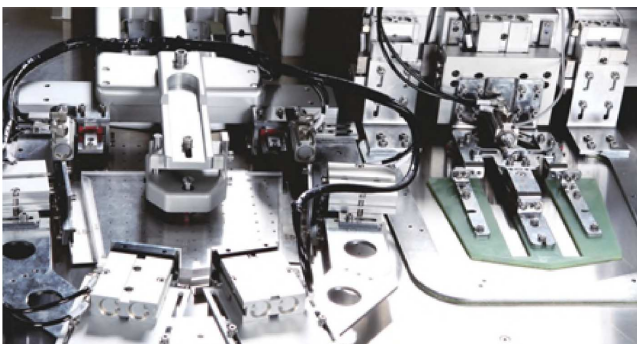
1. Customize the exclusive template according to the type and size of the customer's pocket, the installation and debugging are simple and convenient, and the bag can be quickly folded without preheating and pressing. It can patch 240-300 pockets per hour, and the efficiency is 2-3 times that of the thermal bagging machine.
2. The most advanced Juji 9000C head or Brother 7300A head can be selected, with light noise and vibration and guaranteed efficiency.
3. All parts of the feeding and pressing frame are imported from Japan with SMC brand pneumatic components, the pressing and feeding are smooth and stable, and durable.
4. The automatic material receiving method adopts the latest bionic cross-swing arm type material receiving method, which has a simple structure and clean and neat movements. Save staff time .
5. Using the latest Smedy control program, the operation interface is simple and easy to understand, the rigidity is easy to adjust, there are extra open ports reserved, and the action is simple and convenient, and the overall command output is stable.



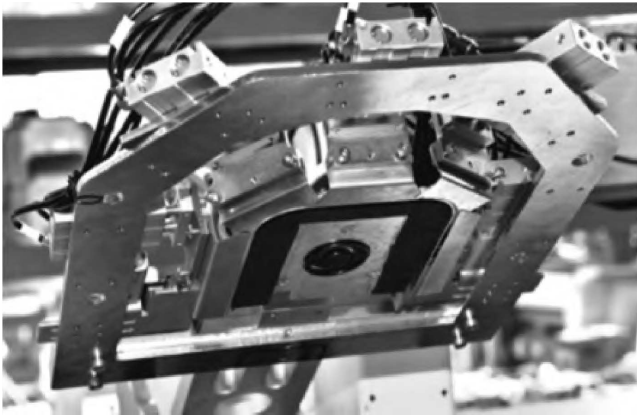
## LS 9025-Fully automatic monochrome non-iron sticker bag unit

Universal automatic sewing unit

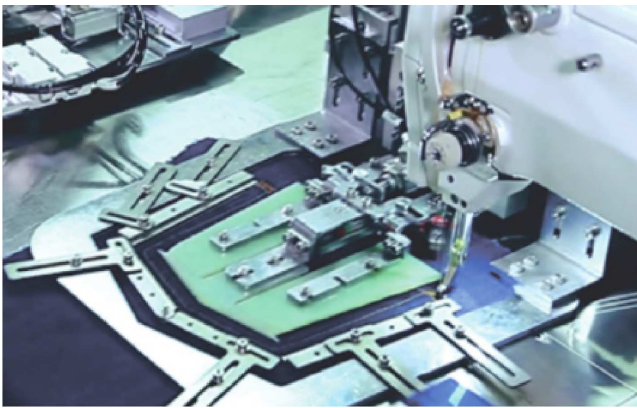
型号/Model	
最大贴袋范围/Max. stitching field	200×220mm
最高贴袋速度/Max. sewing speed	2500rpm
产量每小时/Production	每小时140-160个口袋(取决于不同缝料和贴袋线迹) 140-160 pockets per hour(dependent on fabric and stitches)
针迹长度/ Stitch length	Max. 7mm
机针型号/Needle system	DPX17 Nm 120/19
电压/Power supply	220v,50/60Hz
功率/Power	2.3kw(with pump/带泵),1.2Kw (without pump/无泵)
压缩空气压力/Air pressure	6 bar
机器尺寸/Machine size	1950*1220mm
机器重量/Weight	250kg



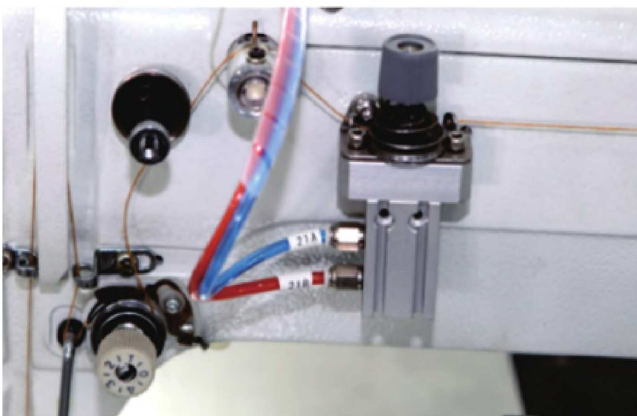
Automatic cold folding device



**Quick mold change mechanism**



**Standard pre-shrinking device**



**disconnection sensor**

**Productivity:**

The fully automatic single-color non-iron patch bag unit can complete the patch bag work of more than 200 pockets per hour, and the speed is usually 2500 rpm

**main feature:**

1. Equipped with SINGER high-quality pattern head, and the core components are all imported brands. Optional brother pattern machine head is also available;
2. Stable and reliable cold folding device;
3. Quick mold changing device, easy and convenient to replace the mold;
4. Standard pre-shrinking device;
5. Disconnection sensing device, stop immediately after disconnection, to avoid useless work;
6. Receiving device to improve work efficiency.

**Scope of application:**

The back pocket patch process is suitable for various shapes and sewing, such as round, square, curved and asymmetrical pocket shapes.



## LS-T3520F-LC-laser bag opener

bag opener

### Related configuration instructions:

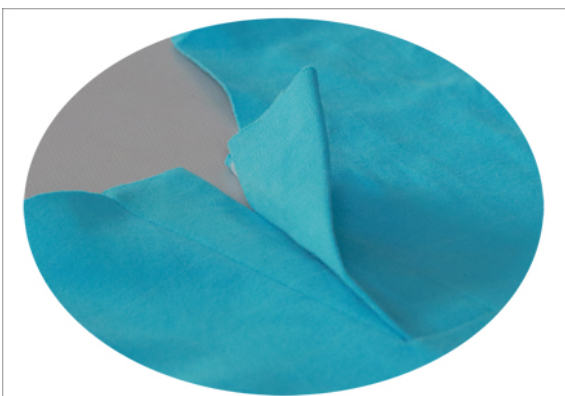
- ①Standard 100W power laser tube, you can choose a higher power laser tube according to user needs;
- ②With its own circulating water cooling system, the laser tube can work continuously for a long time;
- ③The full-time silent air suction device cleans the smoke and dander generated during the cutting process, which is safe, environmentally friendly and clean;
- ④7-inch LCD touch screen, voice prompts, advanced human-computer interaction, " fool-style " operation;
- ⑤ Automatic thread trimming, automatic thread sweeping, electronic thread clamp;
- ⑥Twice the rotary hook, saving the time of changing the thread;
- ⑦ Micro oil needle bar, clean sewing.

### technical parameter:

- ①Needle : DPX17#18 ;
- ②Maximum sewing speed: 2700 ;
- ③Maximum number of stitches for a single pattern: 8000 stitches;
- ④Sewing size ( X\*Y ) : 350X200 mm , laser effective cutting range 210\*195 ) ;
- ⑤ Lifting presser foot drive mode : air pressure type;
- ⑥The lifting amount of the outer presser foot is 32mm ;
- ⑦The lifting amount of the inner presser foot is 20mm ;
- ⑧ Momentum of inner presser foot : 4-10mm ;
- ⑨Motor: 750W servo motor;
- ⑩ Power specification: 220V/ AC;
- ⑪ Air pressure: 0.5Mpa 1.8 l/min ;
- ⑫Machine weight: 200kg (excluding packing box).



High-power laser pocket opening, adjustable power, universal thickness for fabrics



One machine is multi-purpose, in addition to opening pockets, it can also be used for opening placket (replacement of fixtures), pattern sewing (replacement of fixtures)





## LS-1062-Automatic splicing elastic machine

LS-1062

### 技术规格/ Technical specifications

型号	Model	LS 1062
最高缝纫速度	Maximum sewing speed	3000rpm
橡筋缝制宽度	Rubber sewing width	10-60mm
橡筋拼接长度	Rubber sewing length	150-999mm
机针型号	Needle model	DP*17(14#)
电源	Power	220V,50/60Hz
工作效率	Efficiency	产量600-800件/小时 (根据针数宽度)
机器尺寸	Machine size	1300*1200mm
机器重量	Machine weight	250Kg

1. The highest sewing speed of the bar tacking machine reaches 3000 stitches/min, which improves the production efficiency.
2. Using roller type thread clamp, the stitch is more stable and beautiful.
3. Compared with the elastic machine with the head of the traditional bar tacking machine, the sewing range in the Y direction can reach 6mm, which meets the splicing size requirements of most elastics on the market.
4. The machine head is equipped with an optical fiber protection device, and the sewing table automatically stops .



## LS-6011-Automatic Roll Back Pocket Unit

Universal automatic sewing unit

型号/ Model	LS-6011-C	LS-6011-L	LS-6011-CL
采用机头/ Machine head	双针锁式线迹 2 needle chainstitch head	双针链式线迹 2 needle chainstitch head	双针锁式和链式线迹 2 needle chainstitch head
缝纫工序/ Sewing process		自动卷后袋口	
最大缝速/ Max. sewing speed	3500rpm	2700rpm	3500 rpm or 2700rpm
针位/ Needle gauge		1/4" (6.4mm)	
机针规格/ Needle system	TV×7	DP×5	TV×7 or Dp×5
卷边宽度/ Hemming width	可调/Adjustable 10mm		
电源/ Power supply	220v,50/60Hz		
功率/ Power	1kw		
压缩空气压力/ Air pressure	6 bar		
机器尺寸/ Machine size	1350×1100mm(L×W)		
重量/ Weight	190kg		

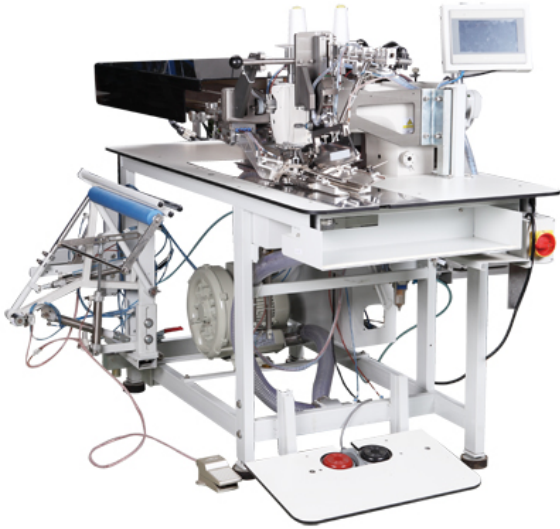
Special needle gauges and folders are available on request.

注：特殊针位和折边器可以订购

### main feature

1. High-quality double-needle lock stitch head or double-needle chain stitch head ( interchangeable );
2. Both machine heads are equipped with Hexin direct drive motor; it takes about 20-30 minutes to replace the machine head; the standard needle position is 6.4 mm;
3. The folding machine can be adjusted, and the feeding belt driven by the stepper motor with a folding width of 10 mm ;
4. The intelligent receiving device adjusts the receiving position according to the height of the receiving pocket;
5. High-quality thread trimming device (both front and rear); Siemens control system with color touch screen; program can be adjusted through the touch screen;





## LS-8081-Fully automatic bag opening machine

bag opener

The automatic bag opening machine is equipped with the latest micro-oil double-needle machine head, which can sew all kinds of pockets from thin to medium-heavy materials at high speed, including single-edged pockets, double-edged pockets, diagonal pockets, pockets with flaps, etc.;

After the machine is equipped with special accessories, it can sew zippers for pockets;

The transmission of the pressing plate of the bag opener and all shearing systems are automatically controlled by their own drive stepper motors, and the center knife is driven by an electric motor alone, which is convenient and flexible to set up.

Specifications may vary by model.



## LS-6061-Automatic Cylinder Hem Hemming Unit

Universal automatic sewing unit

### 技术规格/ Technical specifications

型号/ Model	LS 6061
最高缝速/ Max sewing speed	5000 rpm
最小周长/ Minimum perimeter	92cm (46)
电源/ Power supply	220V, 6.5A
建议气压/ Suggested air pressure	6 bar
重量/ Weight	370Kg
机器尺寸/ Dimension	1900*1300mm

注：特殊针位和折边器可以订购  
Special needle gauges and folders are available on request.

**Main features:** can be equipped with Pegasus, Yamato or other heads; suitable for automatic roll hem ,

It can be used as the first or last process; one person and multiple machines; automatic busbar control design; automatic size control; the stitches of the start and end seams are completely aligned; electronic hem guide system; optional receiving device and Patented inverted mechanism

**Production power:**

According to different sewing materials and sizes of garment pieces, one operator can complete 240-360 pieces of garment roll hem per hour.

At the same time, one operator can operate 2-3 machines.

**По вопросам продаж и поддержки обращайтесь:**

Алматы (7273)495-231  
Архангельск (8182)63-90-72  
Астрахань (8512)99-46-04  
Барнаул (3852)73-04-60  
Белгород (4722)40-23-64  
Брянск (4832)59-03-52  
Владивосток (423)249-28-31  
Волгоград (844)278-03-48  
Вологда (8172)26-41-59  
Воронеж (473)204-51-73  
Екатеринбург (343)384-55-89  
Иваново (4932)77-34-06  
Ижевск (3412)26-03-58  
Иркутск (395)279-98-46  
Россия (495)268-04-70

Казань (843)206-01-48  
Калининград (4012)72-03-81  
Калуга (4842)92-23-67  
Кемерово (3842)65-04-62  
Киров (8332)68-02-04  
Краснодар (861)203-40-90  
Красноярск (391)204-63-61  
Курск (4712)77-13-04  
Липецк (4742)52-20-81  
Магнитогорск (3519)55-03-13  
Москва (495)268-04-70  
Мурманск (8152)59-64-93  
Набережные Челны (8552)20-53-41  
Нижний Новгород (831)429-08-12  
Киргизия (996)312-96-26-47

Новокузнецк (3843)20-46-81  
Новосибирск (383)227-86-73  
Омск (3812)21-46-40  
Орел (4862)44-53-42  
Оренбург (3532)37-68-04  
Пенза (8412)22-31-16  
Пермь (342)205-81-47  
Ростов-на-Дону (863)308-18-15  
Рязань (4912)46-61-64  
Самара (846)206-03-16  
Санкт-Петербург (812)309-46-40  
Саратов (845)249-38-78  
Севастополь (8692)22-31-93  
Симферополь (3652)67-13-56  
Казахстан (7172)727-132

Смоленск (4812)29-41-54  
Сочи (862)225-72-31  
Ставрополь (8652)20-65-13  
Сургут (3462)77-98-35  
Тверь (4822)63-31-35  
Томск (3822)98-41-53  
Тула (4872)74-02-29  
Тюмень (3452)66-21-18  
Ульяновск (8422)24-23-59  
Уфа (347)229-48-12  
Хабаровск (4212)92-98-04  
Челябинск (351)202-03-61  
Череповец (8202)49-02-64  
Ярославль (4852)69-52-93